



Real Estate Services Department

Waterman Incident

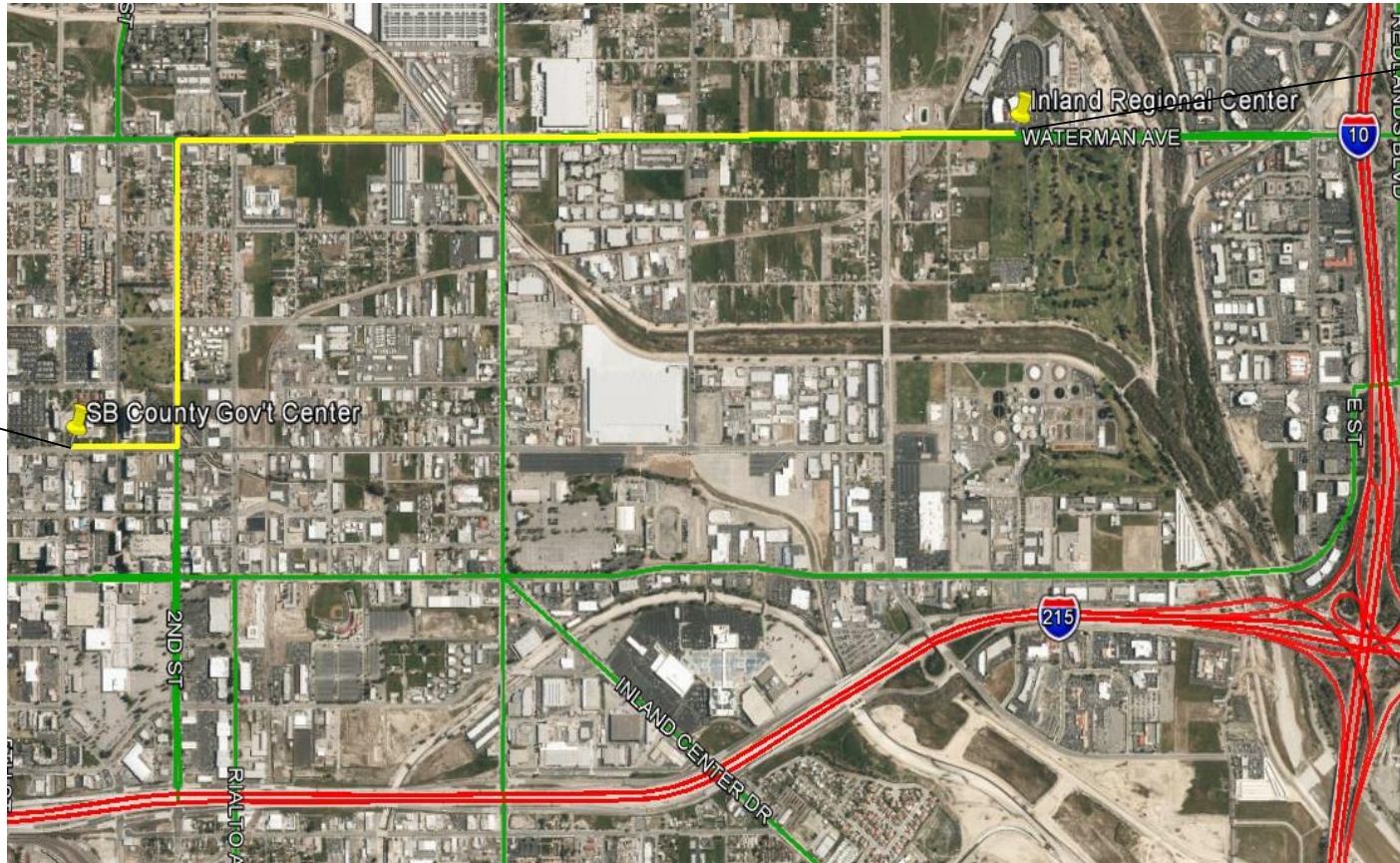
December 2, 2015



Terry W. Thompson
Director

San Bernardino County Government Center to Inland Regional Center (2.1 Miles)

Page 2



Real Estate Services Department

www.SBCounty.gov

Inland Regional Center

Page 3



Real Estate Services Department

www.SBCounty.gov

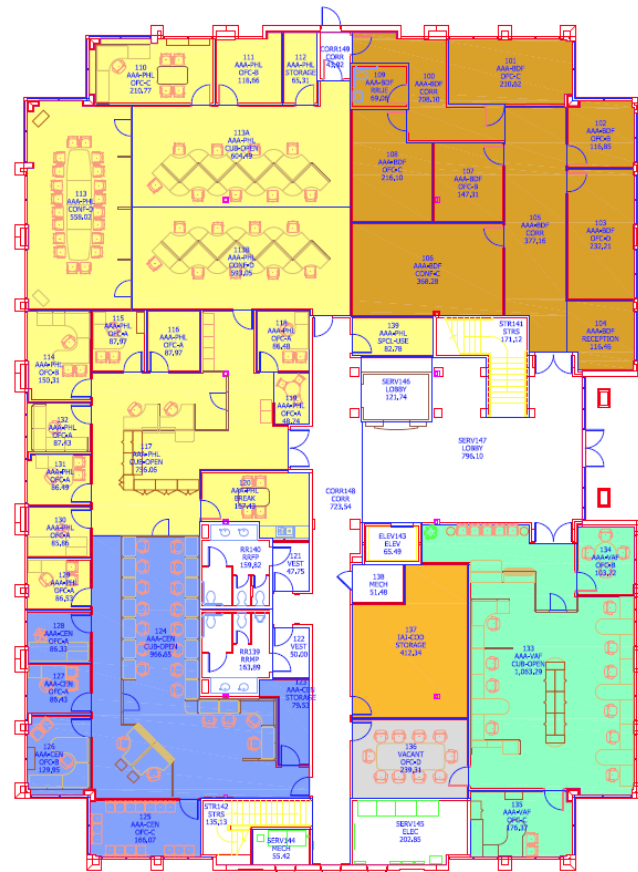
San Bernardino County Government Center

Page 4

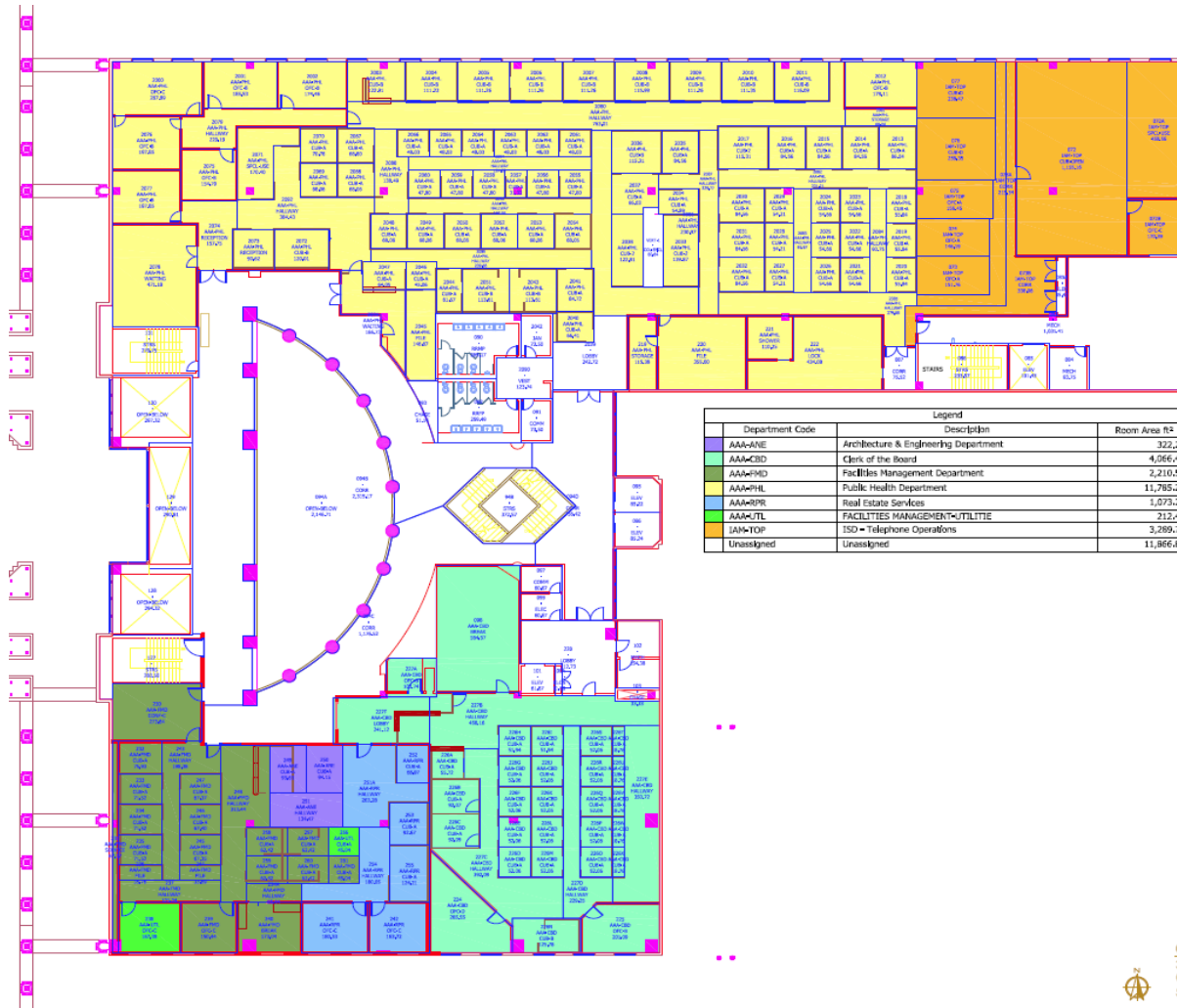


Real Estate Services Department

www.SBCounty.gov



Department Code	Department Name	Room Area
AAA-BDF	Board of Supervisors	2062.15
AAA-CEN	LUS - Code Enforcement Division	1514.96
AAA-PHL	Public Health Department	3964.35
AAA-VAF	Veterans Affairs Department	1343.38
IAJ-COD	ISD - Computer Operations Division	412.34
VACANT	Vacant	239.31



COUNTY GOV'T CENTER
 385 N. Arrowhead Ave., San Bernardino, CA
 CAFM No. SAB031 (D-115)
SECOND Floor
 35,406.06 SF (gross) 34,828.71 SF (net)

- Focus on employee safety and doing what you can to help staff “feel safe”
- Reliable and up-to-date on-line floor plans and building information
- Reliable and up-to-date emergency contacts in your mobile phone
- Leadership/Communication/Teamwork/Empowerment
 - Emergency procurement approval by BOS
 - Single points of contact
 - Having internal team members you can count on
 - Having third party consultants, contractors & vendors you can count on and who share in your commitment to success
- Working with the “human dynamic”
- Documentation of what transpired
 - Insurance/federal funding reimbursement purposes
 - Road map to others to helping future incidents

- Designing complete redo of existing permanent spaces in San Bernardino and Rancho Cucamonga that will look, feel, and smell 100% different
 - Estimated completion in August, 2016
 - Estimated total cost of approximately \$3 million
- County is hiring security consultant firms to evaluate and assess improvements to all County employee occupied facilities throughout the County of San Bernardino
- Forever on Road B
 - To date, only about 50% of impacted EHS employees have returned to work and only about 2/3 of those on a full-time basis